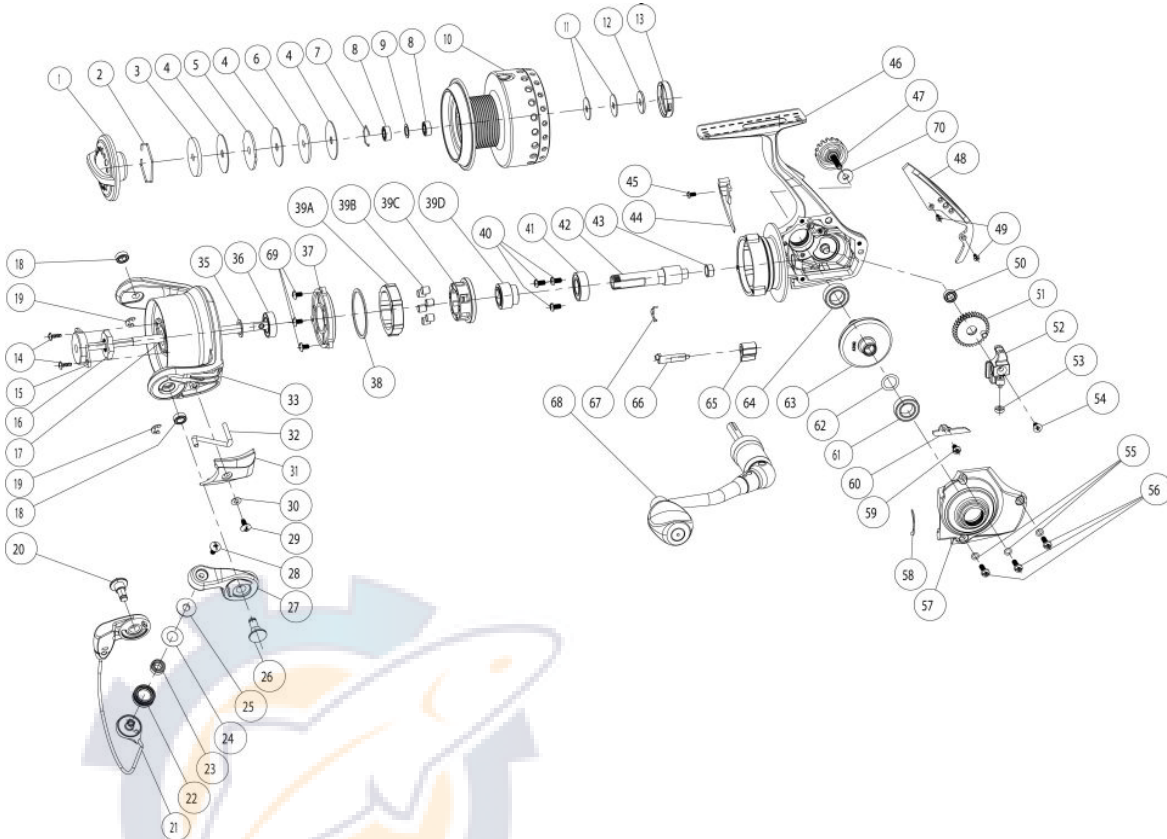


QUANTUM

Kinetic PT

KT30PTIB



Quantum Kinetic KT30PTIB Spinning Reel Part List

Key #	Description	Part No.	Key #	Description	Part No.
1	DRAG KNOB ASSEMBLY	QG332-05	38	WASHER	PG069-01
2	DRAG WASHER RETAINER	RQ038-01	39	CLUTCH ASSEMBLY	PG463-01
3	DRAG WASHER "D"	RQ080-02	39-A	CLUTCH LOCK RING	N/A
4	DRAG WASHER "B" (Only 1 for 10 SIZE)	RQ033-01	39-B	CLUTCH ROLLER	N/A
5	DRAG WASHER "A"	PG081-02	39-C	CLUTCH ROLLER RETAINER	N/A
6	DRAG WASHER "C"	RQ080-01	39-D	CLUTCH SLEEVE	N/A
7	SPOOL BEARING RETAINER	N/A	40	PINION BALL BEARING SCREW	TK057-01
8	SPOOL BUSHING	PG141-01	41	PINION BALL BEARING	BH028-01
9	WASHER	N/A	42	PINION	PG011-01
10	SPOOL ASSEMBLY	QG320-05	43	PINION BUSHING	RQ141-03
11	SPOOL ADJUST WASHER	PG030-01	44	TRIP BUMPER	PG119-01
12	SPOOL WASHER	PG080-01	45	TRIP BUMPER SCREW	AT136-01
13	SPOOL CLICK ASSEMBLY	PG4114-01	46	BODY ASSEMBLY	N/A
14	ROTOR NUT LOCK SCREW	RQ094-01	47	HANDLE SCREW ASSEMBLY	TK373-02
15	MAIN SHAFT BUSHING	RQ214-01	48	BODY REAR CAP	QG250-01
16	ROTOR NUT	SH006-01	49	BODY REAR CAP SCREW	PG107-01
17	MAIN SHAFT	PG015-02	50	O/S GEAR BALL BEARING	CT157-01
18	ROTOR BUSHING	PG158-01	51	O/S GEAR ASSEMBLY	RQ353-01
19	E- CLIP	GH034-01	52	O/S SLIDER ASSEMBLY	PG325-01
20	PIN	QG042-02	53	O/S SLIDER BUSHING	PG227-01
21	BAIL ASSEMBLY	QG347-01	54	MAIN SHAFT SCREW	RQ100-01
22	LINE ROLLER	PQ004-02	55	SIDE COVER SCREW WASHER	RQ142-01
23	LINE ROLLER BUSHING	WP141-01	56	SIDE COVER SCREW	RQ057-01
24	LINE ROLLER WASHER	PQ102-51	57	SIDE COVER ASSEMBLY	PG323-06
25	LINE ROLLER COLLAR	PQ102-01	58	PAD	PG140-01
26	PIN	PG042-02	59	O/S SLIDER RETAINER SCREW	TK057-01
27	ARM LEVER ASSEMBLY	PG307-01	60	O/S SLIDER RETAINER	WP078-01
28	LINE ROLLER SCREW	AQ108-02	61	SIDE COVER BALL BEARING	CH028-01
29	ARM LEVER COVER SCREW	GU077-02	62	DRIVE GEAR ADJUST WASHER	PG105-02
30	ARM LEVER COVER WASHER	SQ142-01	63	DRIVE GEAR	RQ012-01
31	ARM LEVER COVER	QG087-01	64	BODY BALL BEARING	CH028-01
32	KICK LEVER	QG019-01	65	STOPPER LEVER	PG059-01
33	ROTOR ASSEMBLY	N/A	66	STOPPER CAM	TK090-01
34	RETAINER RING	PG038-01	67	STOPPER CAM SPRING	TK089-01
35	ROTOR ADJUST WASHER	PG105-04	68	HANDLE ASSEMBLY	QG318-02
36	CLUTCH RETAINER BALL BEARING	CH028-01	69	CLUTCH RETAINER SCREW	N/A
37	CLUTCH RETAINER	PG060-01	70	HANDLE SCREW WASHER	TH105-01